

Simple Touch® Wand Cellular Shade

- Programming & Operation Instructions



This Simple Touch® Wand motorized shade is already programmed with Up and Bottom Limits. Option to program “My Favorite Position” followed with the instruction below. Enjoy your new motorized shade!

Set up My Favorite Position

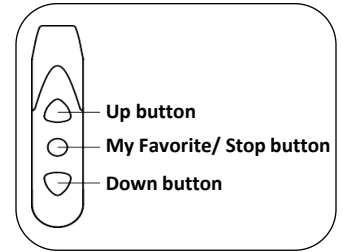


Operate the shade to your favorite position

Press “My Favorite” button for 5 seconds until you hear

Press “My Favorite” button again for 3 seconds, then hear

Set up “My Favorite Position” is done.



To reprogram this motorized shade, please follow the steps below.

Set Clear



Press all 3 buttons at same time until you hear a long

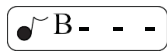
“Clear” is done.

Set up Upper Limit



Press and hold “Up” button to move the shade to Upper limit.

Press “Up” & “My Favorite” buttons at the same time for 5 seconds.



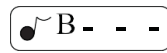
Set up “Upper Limit” is done.

Set up Bottom Limit



Press and hold “Down” button to move the shade to Bottom limit.

Press “Down” & “My Favorite” buttons at the same time for 5 seconds.



Set up “Bottom Limit” is done.

Operation Instruction

Before setting the limits

- Shade can only operate by pressing the buttons
- “My Favorite” button can only Stop the moving of the shade.

After setting the limits

- Press **Up** or **Down** button for 2 seconds, the shade will operate without pressing the buttons
- Press “My Favorite” button for 1 second, the shade will operate to the Favorite position.
- Press any button to stop the moving.
- To change “My Favorite Position”, please follow step “Set Clear”, “Set up Upper Limit”, “Set up Bottom Limit”, and then “Set up My Favorite Position”.